



ISO 9001:2015 | ISO 14001:2015 | ISO 45001:2018

The background features several overlapping, semi-transparent wireframe structures. These structures consist of a grid of lines forming rectangular and triangular shapes, some of which are tilted or rotated. The lines are light blue or white, creating a sense of depth and complexity. The overall composition is clean and modern, with a strong emphasis on geometric forms and perspective.

“BEING THE BEST BY SERVING BETTER”

INTRODUCTION

Global Mechanical Engineering Co. W.L.L. has over 20 years of experience in sharing our services in the construction industry in the Middle East. Since its inception, the company has been associated with some of the big and complex projects in the region.

The Company was established in Qatar in 2004 as part of the group's expansion plan after the formation of our parent company, PROTECH in Bahrain and United Arab Emirates in 1995 with the local sponsor SHEIKH ABDULRAHMAN HASSAN A M AL – THANI. Since the inception, the company had recorded remarkable vertical growth in the field serving building industry in Bahrain and United Arab Emirates. Worked as specialist Contractor and Sub-Contractor for various construction projects in the region.

ABOUT US



MANPOWER SERVICES



MEP CONTRACTING



FACILITY MANAGEMENT



TRADING

THE COMPANY

Global Mechanical Engineering provides high end and a one stop MEP & HVAC solution for Civil, Mechanical and FM contractors. The company has adequate experience working as MEP contractor and specialist MEP Sub-Contractor for various Building Contractors. Our expertise over the field of Electrical, Plumbing & Drainage, Ventilation systems, Kitchen Extraction Systems, Fire Fighting systems, Compressed Air Piping System and heavy Pumping Stations works. The company works under the guidelines of ISO 9001:2015, ISO 14001:2015 and ISO 45001:2018.

VISION

Global Mechanical Co.W.L.L aims to become a contractor of choice for value minded clients and high performing employees.

OUR SERVICES



ELECTROMECHANICAL & HVAC CONTRACTING

MEP & HVAC MANPOWER SERVICES



FACILITY MANAGEMENT

MISSION

Global Mechanical Co.W.L.L is dedicated to providing quality technical and management services to our customers. We will strive to implement a long-term relationship with our clients, based on safety, quality, timely service and an anticipation of their needs. To help fulfill this mission, we will treat our employees fairly and involve them in the quality improvement process to ensure responsiveness and cost-effective work execution.

Electromechanical & HVAC Contracting

Global Mechanical Engineering provides high end and a one stop MEP & HVAC solution for Civil, Mechanical and FM contractors. As MEP contractor, the company is specialized in Electrical, Plumbing & Drainage, Ventilation systems, Kitchen Extraction Systems, Fire Fighting systems, Compressed Air Piping System and heavy Pumping Stations works. The company has adequate experience in Design, estimation, project management, procurement, execution and commissioning.

- Deliver outstanding service on time
- Quality
- Technical sound solutions



HAMAD INTERNATIONAL AIRPORT



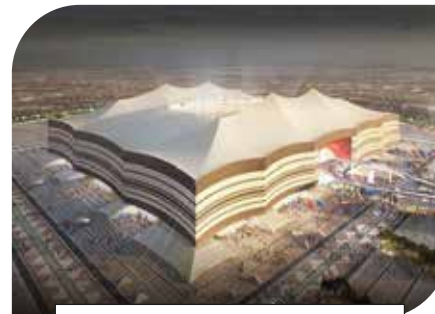
NEW DOHA PORT



BIN AL SHEIKH TOWER



VENDOME MALL



AL BAYT STADIUM



QATAR ARMED FORCE



EDUCATION CITY STADIUM



HAMAD MEDICAL CORPORATION



QATAR RAIL



QATAR MUSEUM



PEARL QATAR



US AIRBASE

Electromechanical & HVAC Manpower Services

Global Mechanical Engineering provides high quality MEP & HVAC manpower solutions for Oil & Gas, Civil, Mechanical and FM contractors. With over 750 manpower portfolios, the company supports many reputed projects by mobilizing our manpower.

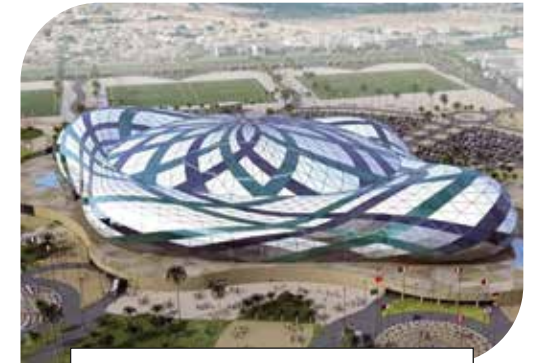
- Engineers
- Supervisors
- Pipe Fitters
- Plumbers
- Electricians
- Fabricators
- Insulators
- Ductmen
- Technicians
- Welders

FACILITY MANAGEMENT

Global Mechanical Engineering facility management division addresses facility services bringing in place a professional trained team with diverse skill-set to perform multiple tasks. Specialized in Hard facility management. Based on contract the company provides preventive, corrective and predictive maintenance for residential, commercial and industrial properties



GHARAF A SPORT CLUB



LUSAIL MULTIPURPOSE HALL



DUHAIL STADIUM



AL-SADD SPORT CLUB

FACILITIES

OFFICE LOCATION

Global Mechanical Engineering head office located in Wakrah. Besides our projects and administration offices in Al Wakra, we have mechanical Engineering workshop at Sanaya other than storage yard and industrial fabrication facilities at Sanaya 38. Dedicated labor Camps and labor accommodations – Sanaya, Umm Salal, Al Wakra, Al Khor, Al Wukair



HEAD OFFICE



SANAYA CAMP



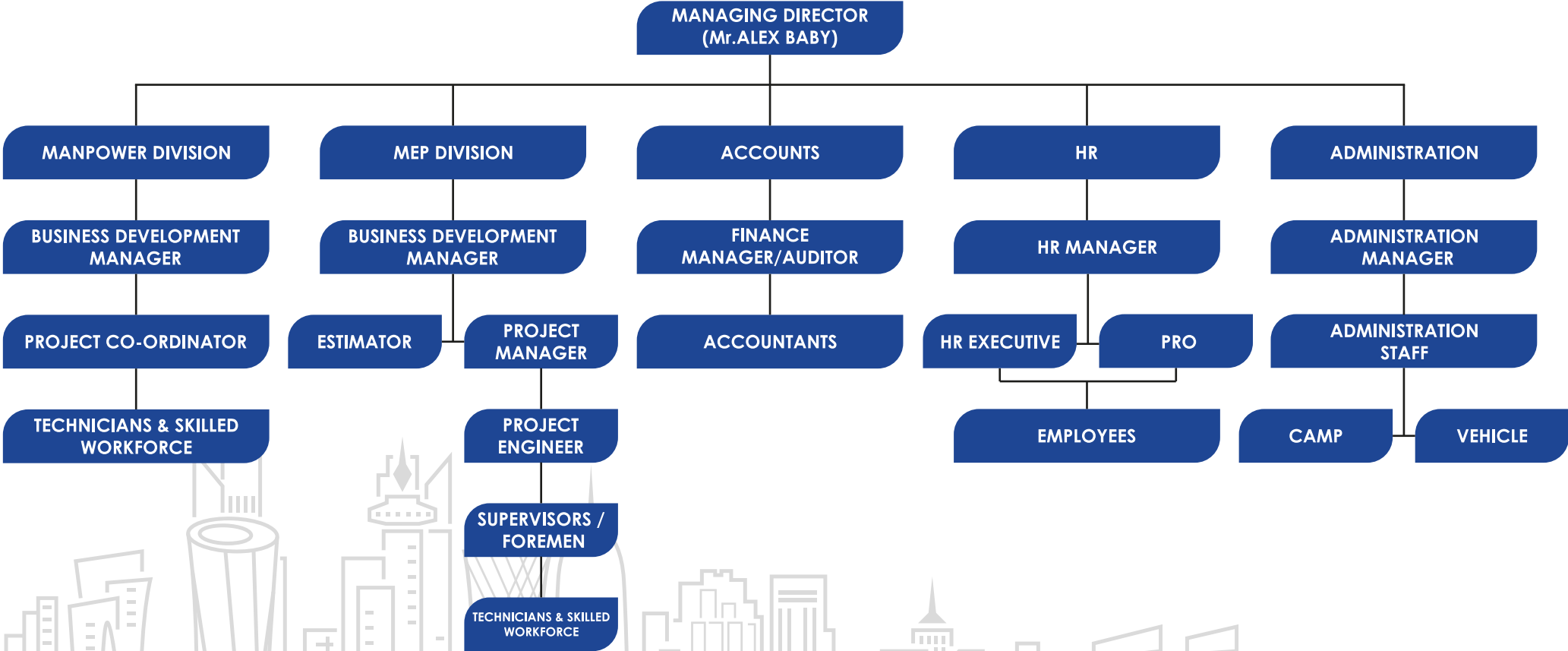
UMM SALAL CAMP

ENGINEERING AND FABRICATION WORKSHOPS AND STORAGE FACILITY

We have engineering workshop facility at Al Khor covers a total area of 2400sqm and roofed with infrastructure and state of art machineries. Our 6000 sqm fabrication yard is located at Umm Salal Ali is equiped with state of art machineries. Our storage yard of 1200 sqm with complete storage facilities and storage handling equipments is located at Umm Salal Ali.



ORGANISATIONAL CHART



SELECTED LISTS OF CLIENTS



CERTIFICATIONS & ACCREDITATIONS



ISO 9001:2015



ACCREDITED
Management Systems
certification Body
MSCB-124

ISO 14001:2015



ISO 45001:2018



اللجنة العليا
للمشاريع والبرث
Supreme Committee
for Delivery & Legacy



Global

Mechanical Engineering Co.W.L.L

Office# 03, First Floor, Al Muftah Building
Al Wakrah Road P.O.Box : 38340
Doha - Qatar

Tel : 44117209, Fax : 44117105
info@globalmechqatar.com